

CONTRIBUTION



เอกสารประกอบการสอน
วิชาหลักชีววิทยา 1
(Principles of Biology I)
รหัสวิชา 104101

เรื่อง
เอกภาพของสิ่งมีชีวิต
(The Unity of Life)

โดย
ดร. นवलน้อย จูฑะพงษ์
สาขาวิชาชีววิทยา
สำนักวิชาวิทยาศาสตร์
มหาวิทยาลัยเทคโนโลยีสุรนารี

THE CENTER FOR LIBRARY RESOURCES AND EDUCATIONAL MEDIA
SURANAREE UNIVERSITY OF TECHNOLOGY

The Unity of Life

อ. นวณ้อย จุฑะพงษ์
สาขาวิชาชีววิทยา
Room SC D10, C building
Tel: 044-224620
e-mail: nuannoij@sut.ac.th

The Unity of Life

1. Fundamentals concept of biology
2. Basic chemistry of life
3. Cells: basic unit of life
4. Energy and life: Biochemical reaction and enzyme
5. Cellular respiration
6. Photosynthesis

Fundamental Concepts of Biology

- Biology
- Properties of Life
- The kingdoms of life
- How Science Is Done
- Theory of Evolution

Biology

- The science of life
- The study of living things

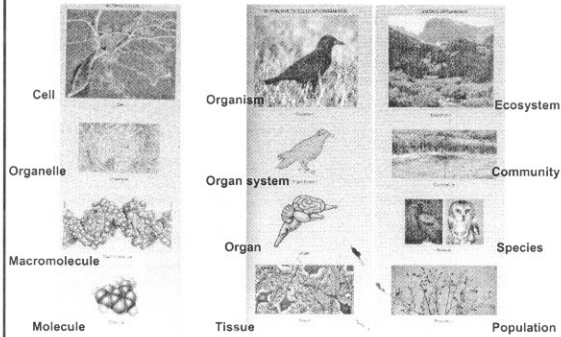
Properties of Life

1. Order
2. Sensitivity
3. Growth and Development
4. Reproduction
5. Energy utilization
6. Homeostasis
7. Evolutionary adaptation

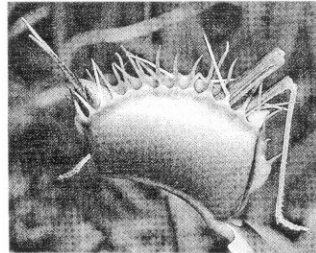
Order

Hierarchical organization
of living things

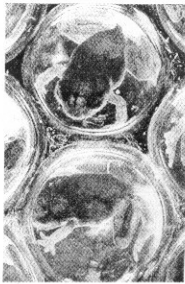
Hierarchical organization of living things



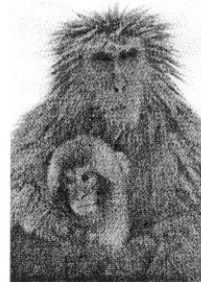
Sensitivity



Growth and Development



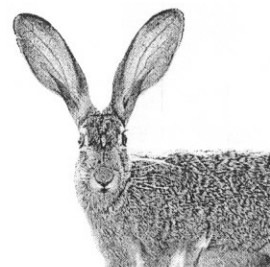
Reproduction



Energy utilization



Homeostasis



Evolutionary Adaptation

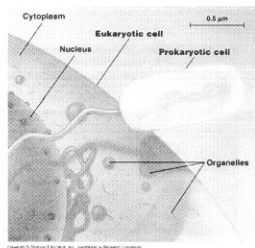
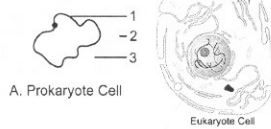


Cells

are an organism's basic units of structure and function.

Two major cell types

1. Prokaryotic cells
2. Eukaryotic cells

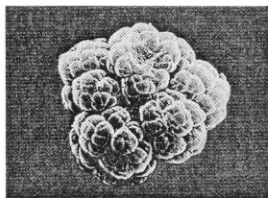


The kingdoms of life

1. Archaeobacteria
2. Eubacteria
3. Protista
4. Fungi
5. Plantae
6. Animalia

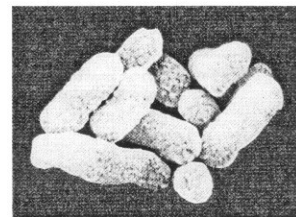
Archaeobacteria

- Prokaryote
- ไม่มี peptidoglycan เป็นส่วนประกอบของผนังเซลล์



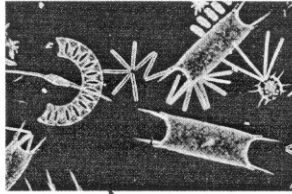
Eubacteria

- Prokaryote
- มี peptidoglycan เป็นส่วนประกอบของผนังเซลล์



Protista

- Eukaryote
- เป็นพวก Cell เดี่ยว ยกเว้นพวก algae
- สังเคราะห์ด้วยแสงได้
- อาศัยสิ่งมีชีวิตชนิดอื่น



Fungi

- Eukaryote
- เป็นพวกหลายเซลล์ ยกเว้นพวก yeast
- มี chitin เป็นส่วนประกอบ
- เคลื่อนที่ไม่ได้



Plantae

- Eukaryote
- เป็นพวกหลายเซลล์
- สังเคราะห์ด้วยแสงได้
- เคลื่อนที่ไม่ได้



Animalia

- Eukaryote
- เป็นพวกหลายเซลล์ ยกเว้นพวก yeast
- มี chitin เป็นส่วนประกอบ
- ต้องใช้พลังงานจากสิ่งมีชีวิตอื่น



Domains of life

1. Archaea
 - Archaeobacteria
2. Bacteria
 - Eubacteria
3. Eukarya
 - Protista
 - Fungi
 - Plantae
 - Amimalia

Features of Domains of Life

Domain	Archaea	Bacteria	Eukarya
Amino acid that initiates protein synthesis	Methionine	Formyl methionine	Methionine
Introns	Present in genes	Absent	Present
Membrane bounded organelles	Absent	Absent	Present

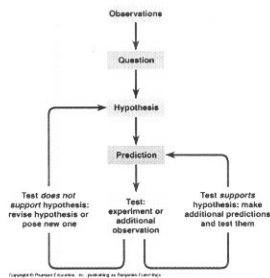
Features of Domains of Life

Domain \ Feature	Archaea	Bacteria	Eukarya
Nuclear envelope	Absent	Absent	Present
Number of different RNA polymerases	Several	one	Several
Peptidoglycan in cell wall	Absent	Present	Absent

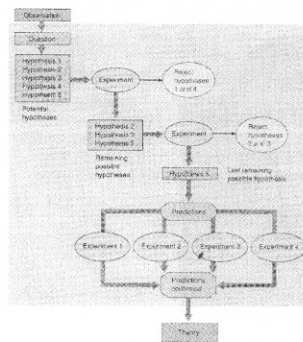
Importance of Biology

- Expanding population
- Life threatening diseases, cancer, AIDS, avian flu
- Suitable management of world's resources
- Improvement of our quality of lives

How Science Is Done



How Science Is Done



Theory

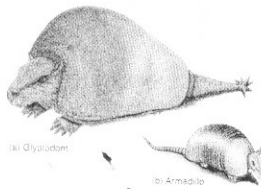
- In general public,
 - Theory implies a lack of knowledge or a guess.
- In scientist's sense,
 - Theories are solid ground of science that of which we are most certain.

Theory of Evolution

- It proposes that one type of organism can gradually evolve into another.
- Charles Robert Darwin, an English naturalist (1809-1882)
- Expedition around the coasts of South America with the Beagle (1831-1836)

Darwin's Evidence

- Fossil armadillo (Glyptodont)



Darwin's Evidence

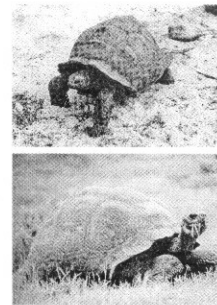
- There are progressive changes in characteristics in rock strata layers (fossils).
- Lands in similar climates, such as Australia, South Africa, California, and Chile, have unrelated plants and animals.

Darwin's Evidence

- The plants and animals of each continent are distinctive.

Darwin's Evidence

- Endemic species in oceanic islands
- Galapagos tortoises



Darwin's Evidence

- Species on oceanic islands show strong affinities to those on the nearest mainland
- Galapagos finches



Basic Chemistry of Life

อ. นवलน้อย จุฑะพงษ์

โครงสร้างของเนื้อหา (Outline)

- Composition of Matter
- Atoms and Structure of Atoms
- Isotope
- Chemical bonds
- Biological Macromolecules
 - Carbohydrate
 - Lipid
 - Protein
 - Nucleic acid

วัตถุประสงค์

- สามารถจดจำธาตุสำคัญที่เป็นองค์ประกอบของสิ่งมีชีวิต
- รู้จักความหมายของคำต่าง ๆ ที่ใช้อธิบายคุณสมบัติของธาตุและสารประกอบ
- รู้จัก functional group ต่าง ๆ ที่เป็นส่วนประกอบของสารประกอบอินทรีย์
- เข้าใจถึงความแตกต่างของโครงสร้างทางเคมีและหน้าที่ของสารประกอบอินทรีย์แต่ละชนิด

Composition of Matter

- Organic material
- Inorganic material
- 92 natural elements
- 25 elements: B C Ca Cl Co Cr Cu F Fe H I K Mg Mn Mo N Na O P S Se Si Sn V Zn
- 4 elements: C H N O

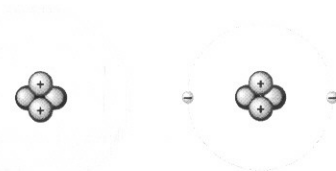
Structure of Atoms

- Atom
 - Proton
 - Neutron
 - Electron
- Atomic mass (dalton)
- Dalton = 1.7×10^{-24} gram
- 6.02×10^{23} dalton = 1 gram
- 1 proton = 1.009 dalton
- 1 electron = 1/1840 dalton

Atomic mass \rightarrow 4
Atomic number \rightarrow 2

He

Cloud of negative charge (2 electrons)



(a)
Copyright © Pearson Education, Inc. publishing as Benjamin Cummings

(b)

Isotope

- An element: the same number of protons
- More neutron = different atomic forms = isotopes of element

• Example: ${}^{12}_6\text{C}$ ${}^{13}_6\text{C}$ ${}^{14}_6\text{C}$

- Half life: ${}^{14}\text{C} = 5600$ years
- Many useful applications

Radioisotope



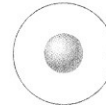
${}^{12}\text{C}$



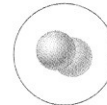
${}^{13}\text{C}$



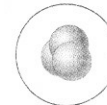
${}^{14}\text{C}$



Hydrogen (H)

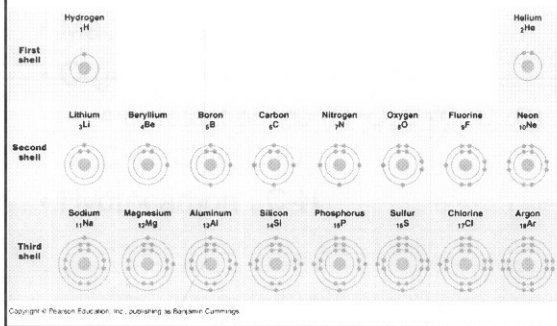


Deuterium (${}^2\text{H}$)



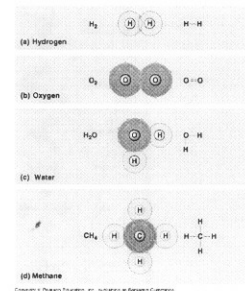
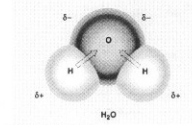
Tritium (${}^3\text{H}$)

Electron Configuration and Chemical Properties



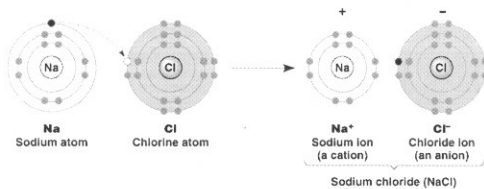
Chemical bonds hold molecule together

- Covalent bond: electronegativity
 - Polar covalent bond
 - Nonpolar covalent bond



Chemical bonds hold molecule together

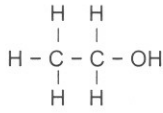
- Ionic bond
 - Cation
 - Anion



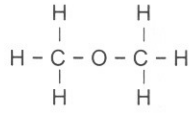
Isomers

- Same molecular formula
- Three types
 - Structural isomer
 - Stereoisomer (geometric isomers)
 - Enantiomer

Structural isomer

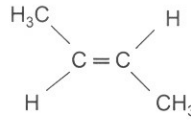


Ethanol
(C₂H₆O)

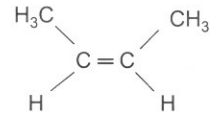


Dimethyl Ether
(C₂H₆O)

Stereoisomer isomer



trans-2-butene



cis-2-butene

The Chemical Building Blocks of Life

- Macromolecules
- Organic molecule : Carbon
 - 4 covalent bonds (C-C, C=C, C≡C)
 - C-H, C-N, C-O
- Hydrocarbon : C-H

Functional Group

Group	Chemical Formula	Structural Formula	Ball-and-Stick Model	Found In
Hydroxyl	-OH			Alcohols
Carbonyl	C=O			Formaldehyde
Carboxyl	-COOH			Vinegar
Amino	-NH ₂			Ammonia
Sulphydryl	-SH			Rubber
Phosphate	-PO ₄			ATP
Methyl	-CH ₃			Methane gas

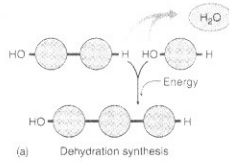
Group	Chemical Formula	Structural Formula	Ball-and-Stick Model	Found In
Hydroxyl	-OH			Alcohols
Carbonyl	C=O			Formaldehyde
Carboxyl	-COOH			Vinegar
Amino	-NH ₂			Ammonia
Sulphydryl	-SH			Rubber
Phosphate	-PO ₄			ATP
Methyl	-CH ₃			Methane gas

Biological Macromolecules

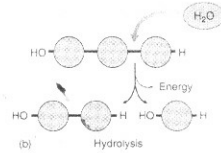
- Carbohydrate
- Lipid
- Protein
- Nucleic acid

Building Macromolecules

- Dehydration synthesis
- Consume energy
- Anabolic reaction

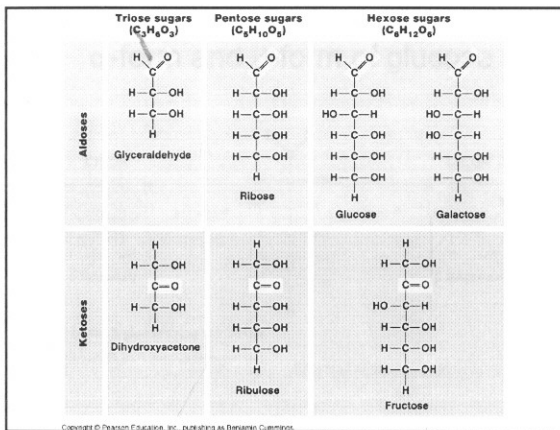


- Hydrolysis
- Release energy
- Catabolic reaction

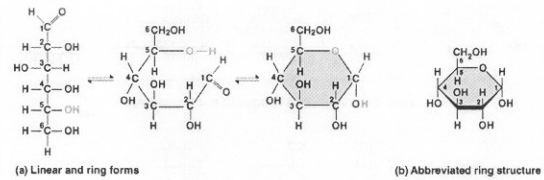


Carbohydrates

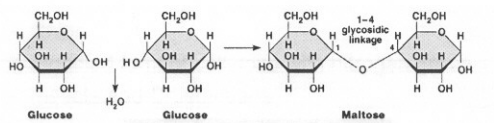
- Carbon : Hydrogen : Oxygen = 1 : 2 : 1
- $(CH_2O)_n$
- Energy storage
- Sugar are simple carbohydrates
 - Monosaccharide
 - Disaccharide
 - Polysaccharide



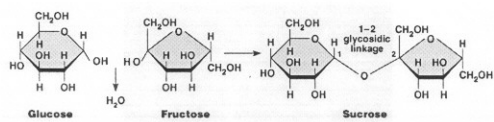
Monosaccharide



Disaccharide



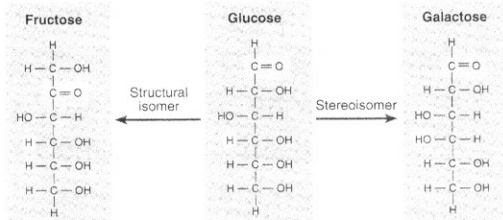
(a) Dehydration synthesis of maltose



(b) Dehydration synthesis of sucrose
Copyright © Pearson Education, Inc., publishing as Benjamin Cummings.

Sugar Isomer

Structural isomer and Stereoisomer



Transport Disaccharide

- Sucrose = Glucose + Fructose
- Maltose = Glucose + Glucose
- Lactose = Glucose + Galactose

Storage Polysaccharide

- Starch
 - Amylose
 - Amylopectin
- Glycogen

α-form and β-form of glucose

(a) α and β glucose ring structures

Copyright © Pearson Education, Inc., publishing as Benjamin Cummings.

Structural Carbohydrates

(b) Starch: 1-4 linkage of α glucose monomers

(c) Cellulose: 1-4 linkage of β glucose monomers

Copyright © Pearson Education, Inc., publishing as Benjamin Cummings.

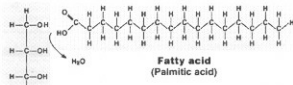
Structural Carbohydrates

- Chitin
- Modified form of cellulose with nitrogen group
- Insects and Crustaceans

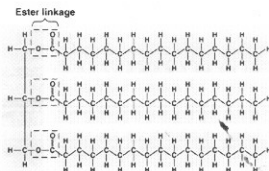
Lipid

- Hydrogen : Oxygen > 2 : 1
- Nonpolar molecule
- Oil : olive oil, corn oil, coconut oil
- Wax : beewax, earwax
- Composition : 2 subunits
 - One molecule of Glycerol
 - Three molecules of Fatty acid

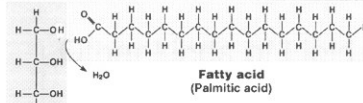
Triacylglycerol (Triglyceride)



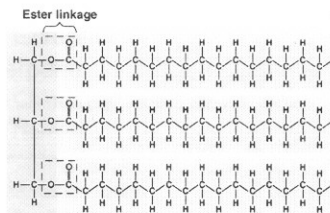
Glycerol
(a) Dehydration synthesis



Copyright © Pearson Education, Inc., publishing as Benjamin Cummings.

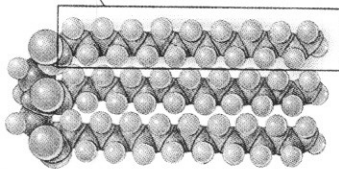
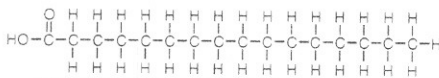


Glycerol
(a) Dehydration synthesis



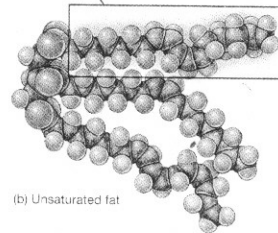
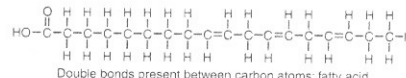
Copyright © Pearson Education, Inc., publishing as Benjamin Cummings.

Saturated fatty acid



(a) Saturated fat

Unsaturated fatty acid

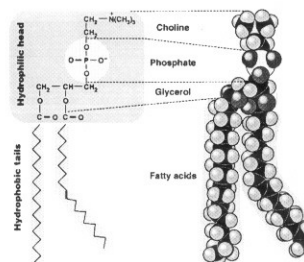


(b) Unsaturated fat

Fat

- > 40 Carbon
- Saturated fat
 - Animal fat (except from fish)
 - Higher melting point
 - More calories
- Unsaturated fat
 - Fat from plant (except from palm and coconut)
 - Lower melting point
 - Less calories

Other kinds of Lipids

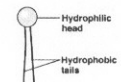


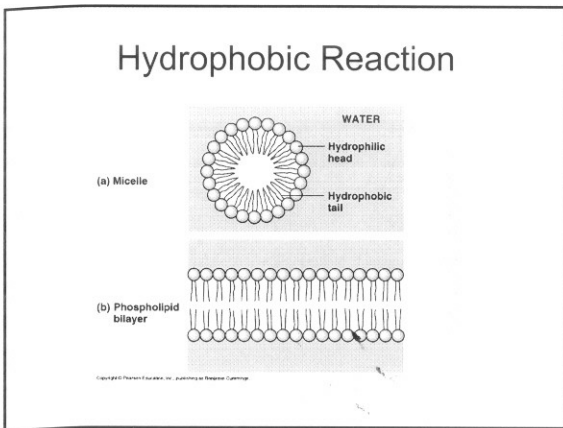
(a) Structural formula

(b) Space-filling model

(c) Phospholipid symbol

- Phospholipid
- Polar molecule
 - Polar head
 - Nonpolar tail





Other kinds of Lipids

- **Steroid**
 - Cholesterol
 - Testosterone
 - Estrogen
- **Terpene**
 - Chlorophyll
 - Rubber
- **Prostaglandin**
 - 2 Fatty acids
 - 5-carbon ring

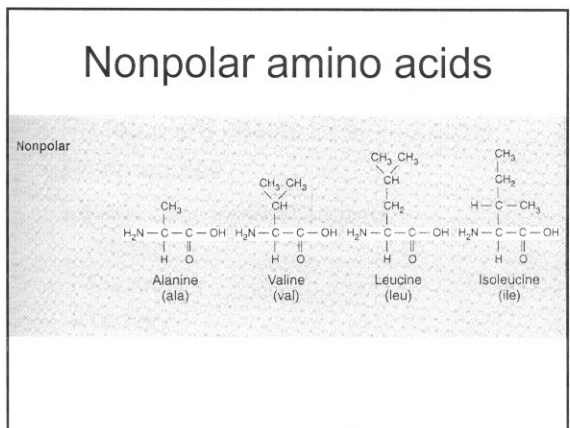
- ### Protein
- **Functions**
 - Enzyme catalysis
 - Defense
 - Transport protein
 - Support
 - Motion
 - Regulation

Building blocks of Protein

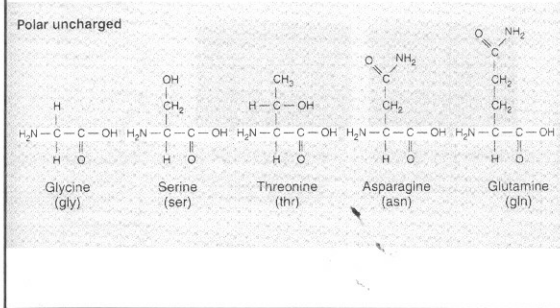
- **Amino acids (20)**
- **Composition**
 - Central carbon
 - Amino group : -NH₂
 - Carboxyl group : -COOH
 - Hydrogen atom : H

$$\begin{array}{c}
 R \\
 | \\
 H_2N - C - COOH \\
 | \\
 H
 \end{array}$$

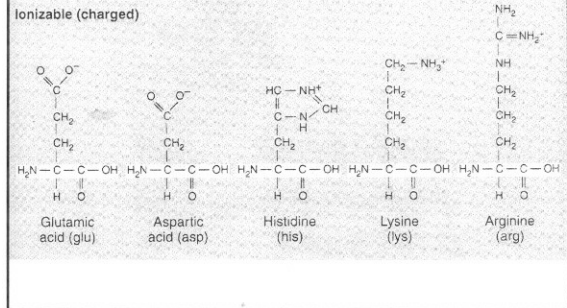
- ### Five groups of Amino acids
1. Nonpolar amino acids
 2. Polar and uncharged amino acids
 3. Ionizable amino acids
 4. Aromatic amino acids
 5. Special-function amino acids



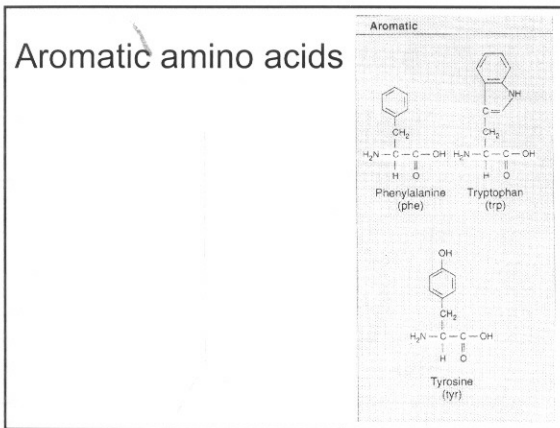
Polar and uncharged amino acids



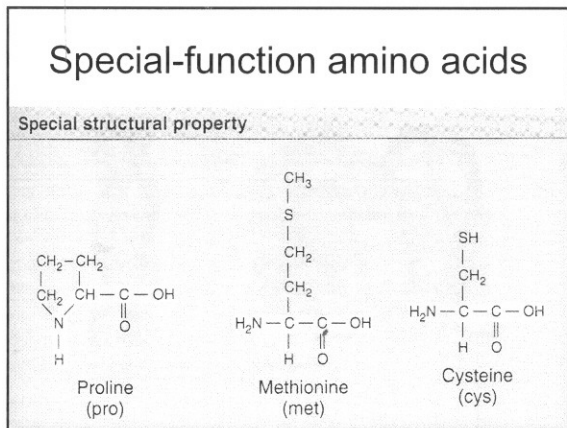
Ionizable amino acids



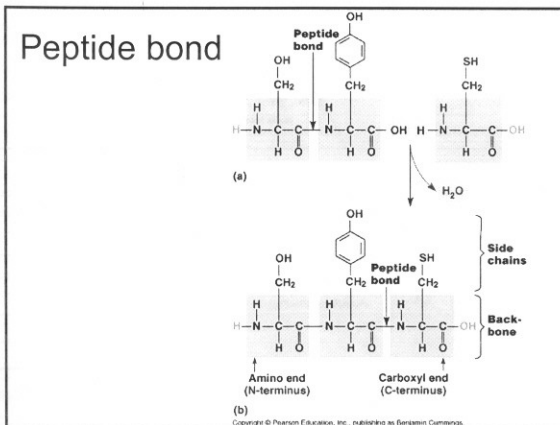
Aromatic amino acids



Special-function amino acids

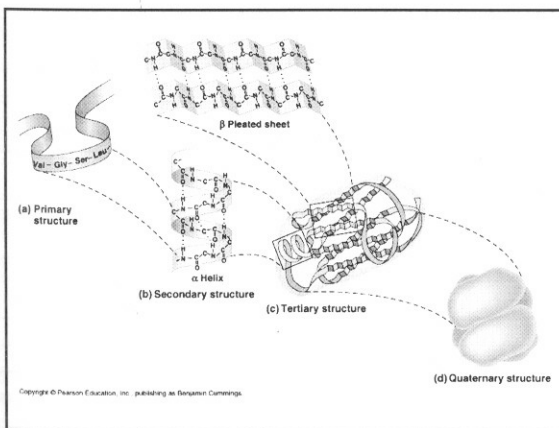
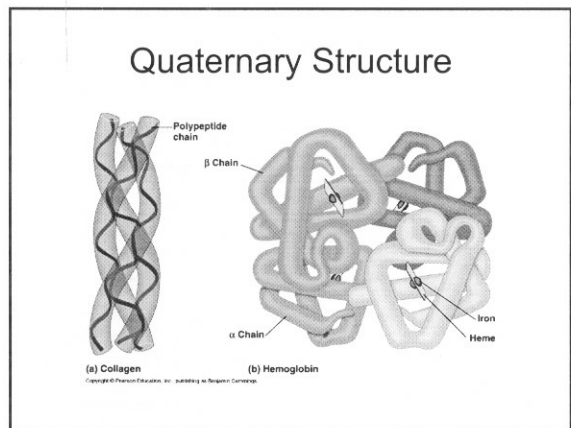
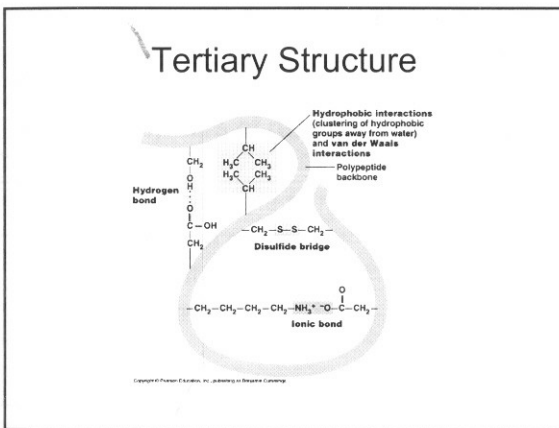
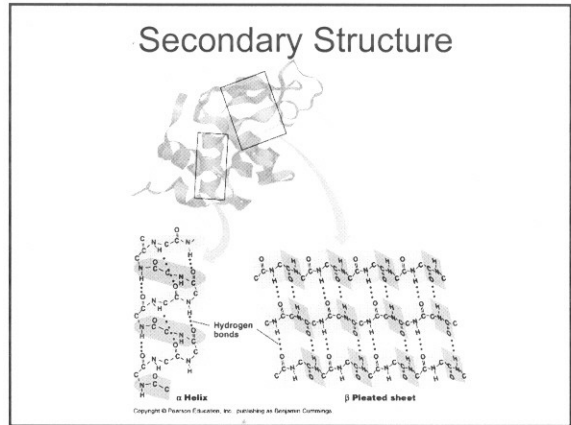
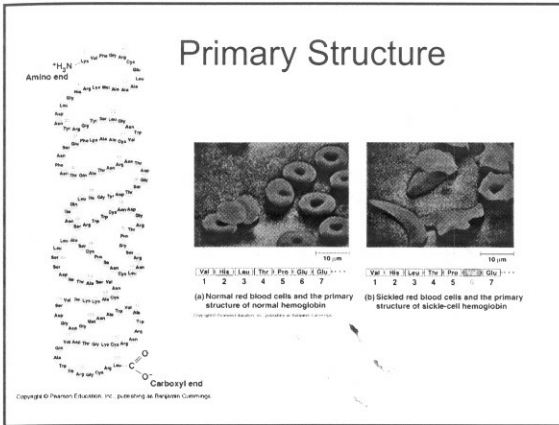


Peptide bond



Protein Structure

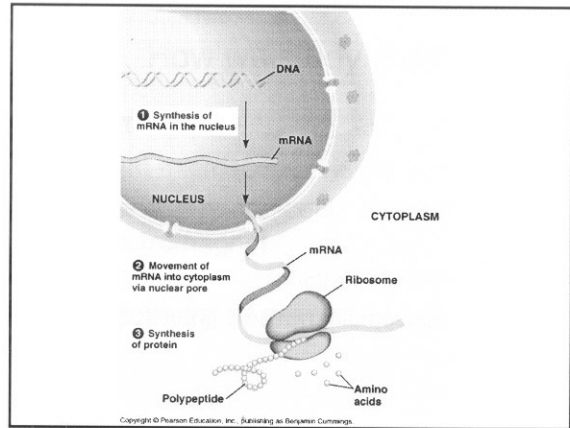
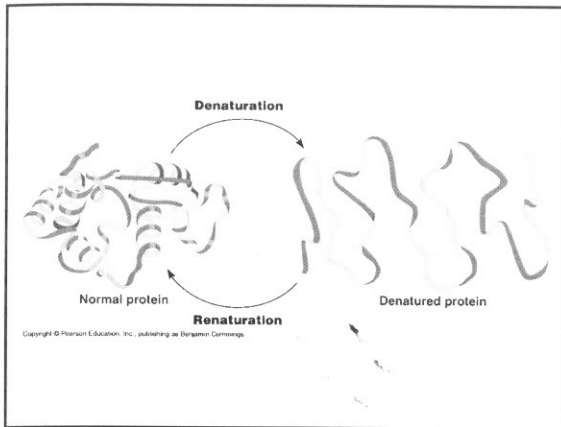
- Proteins are chains of amino acids.
- Polypeptides
- Levels of protein structure
 - Primary
 - Secondary
 - Tertiary
 - Quaternary



How protein fold?
Chaperone proteins

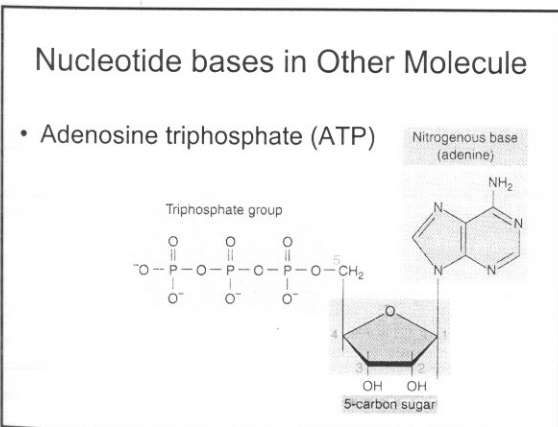
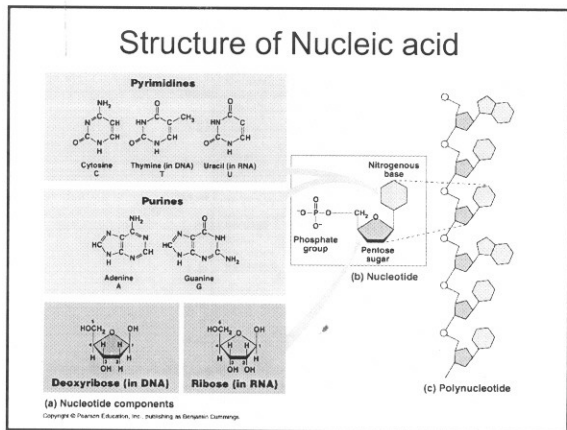
How protein unfold?
 • pH
 • Temperature
 • Changes in ionic concentration

Protein Denaturation



Nucleic acid

- Long polymers of repeating nucleotide subunits
- Three components of nucleotide
 - a five-carbon sugar
 - a phosphate group
 - a nitrogen-containing base



Nucleotide bases in Other Molecule

- Coenzyme
 - Nicotinamide-adenine dinucleotide (NAD⁺)
 - Flavin-adenine dinucleotide (FAD⁺)


Cells: Basic unit of life

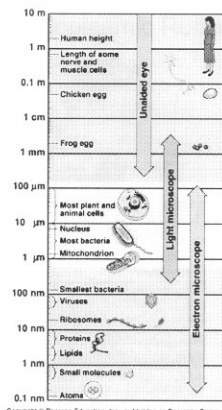
อ. นวรัตน์ อัย จุฑะพงษ์

How we study cells

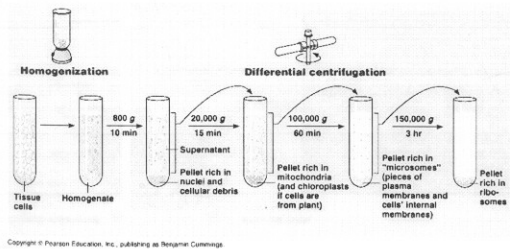
- Microscope
 - Light microscope: visible light, lens
 - Electron microscope: electron beam, electromagnet
 - Transmission electron microscope
 - Scanning electron microscope

Microscope

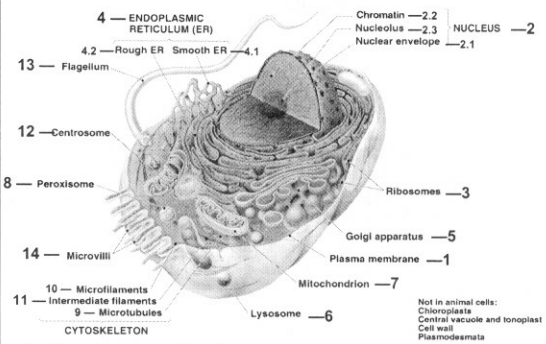
- Two parameters
 - Magnification \circ 
 - Resolving power (resolution) $\circ\circ$

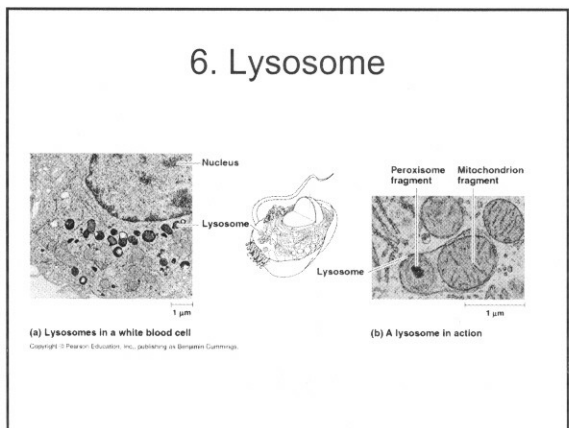
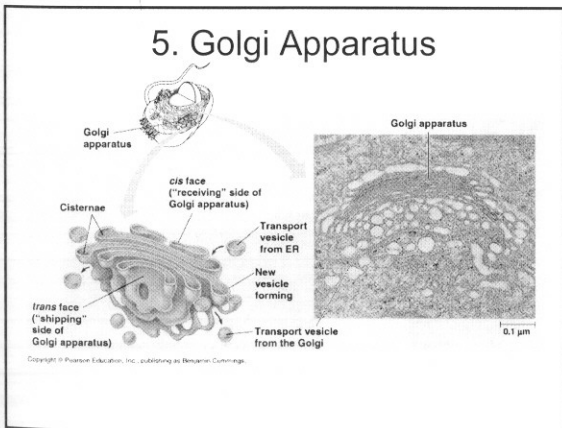
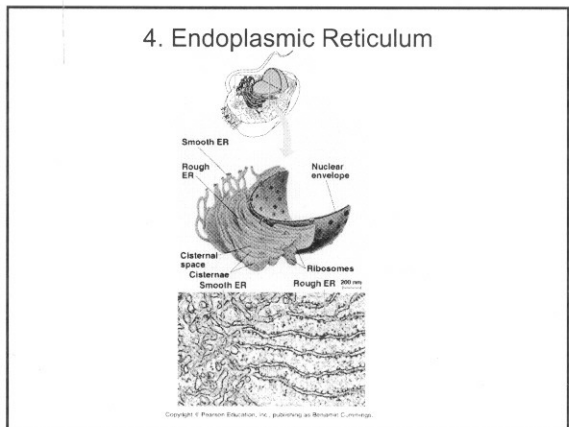
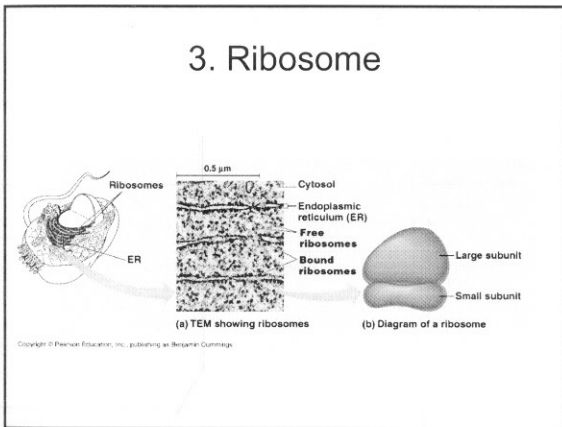
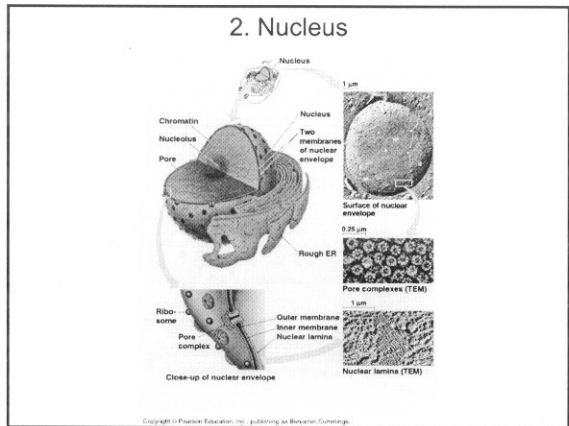
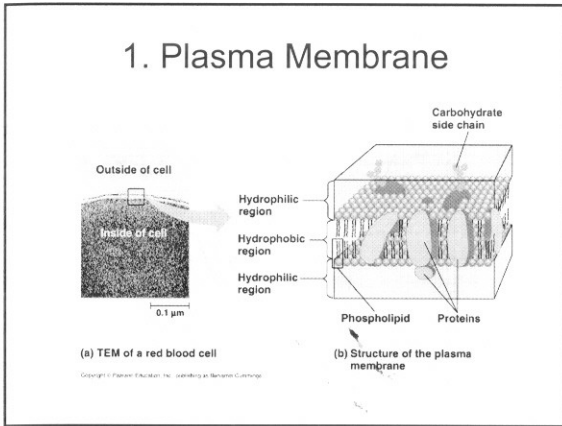


Cell Fractionation

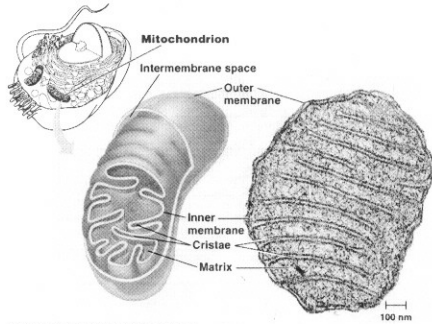


Animal Cell



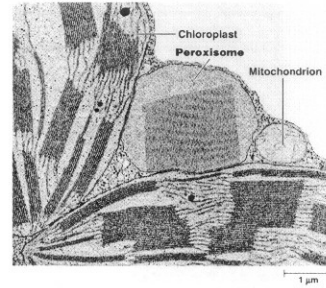


7. Mitochondria



Copyright © Pearson Education, Inc., publishing as Benjamin Cummings.

8. Peroxisome



Copyright © Pearson Education, Inc., publishing as Benjamin Cummings.

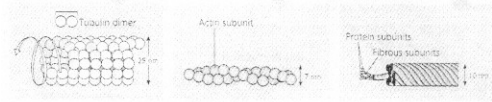
Cytoskeleton

Property	9. Microtubules	10. Microfilament	11. Intermediate Filament
Structure	Hollow tube, Wall: 13 columns of tubulin	2 intertwined strands of actin	Fibrous protein supercoiled into thicker cables
Diameter	25 nm with 15-nm lumen	7 nm	8-12 nm
Protein subunit	Tubulin: α -tubulin and β -tubulin	Actin	One protein: Keratin family
Main function	Cell shape Cell motility Chromosome movement Organelle movements	Cell shape Cell motility Muscle contraction	Cell shape Anchorage of nucleus and

Cytoskeleton

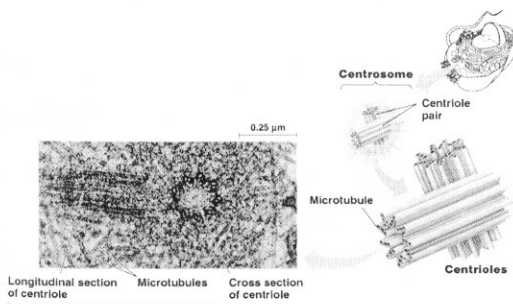
9. Microtubules

11. Intermediate Filament



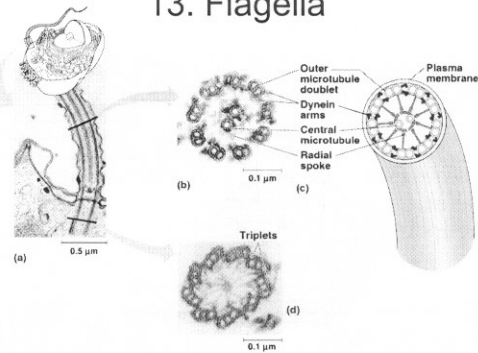
10. Microfilament

12. Centrosome

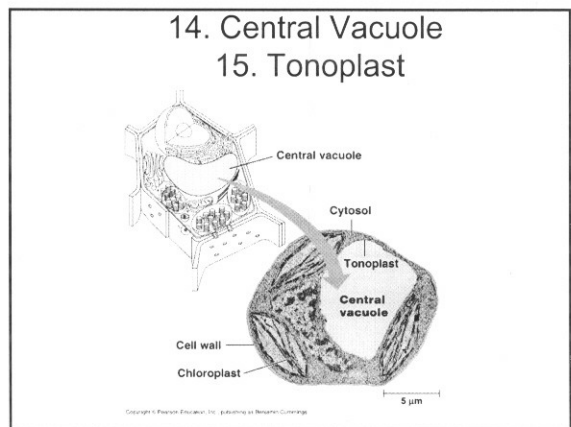
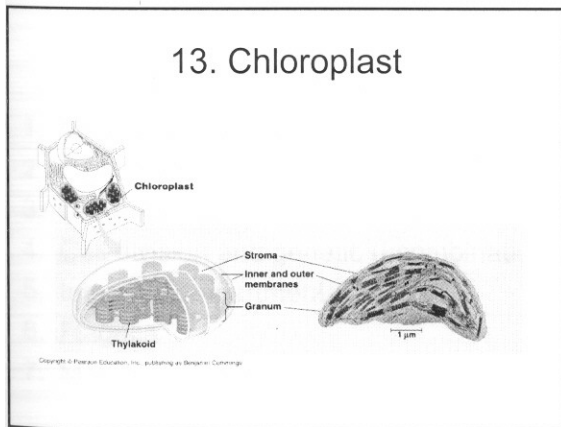
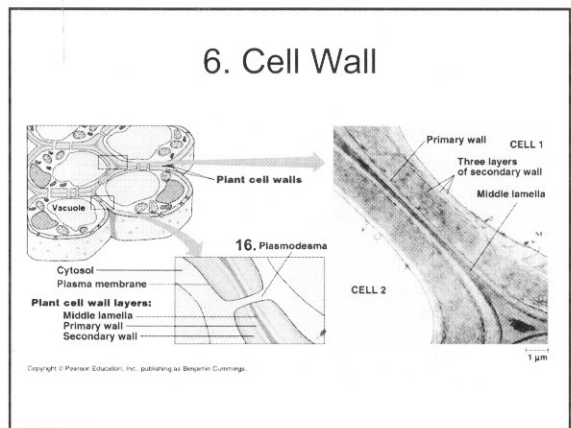
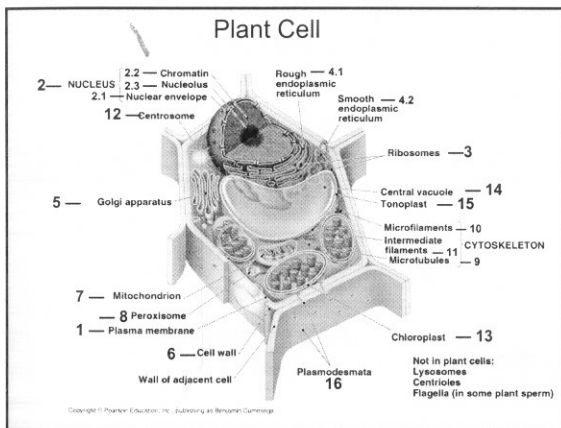
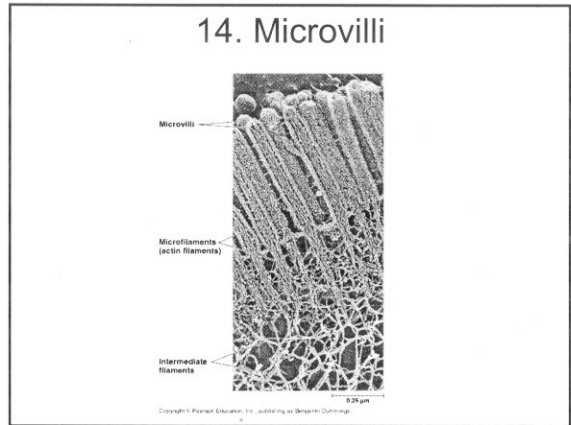
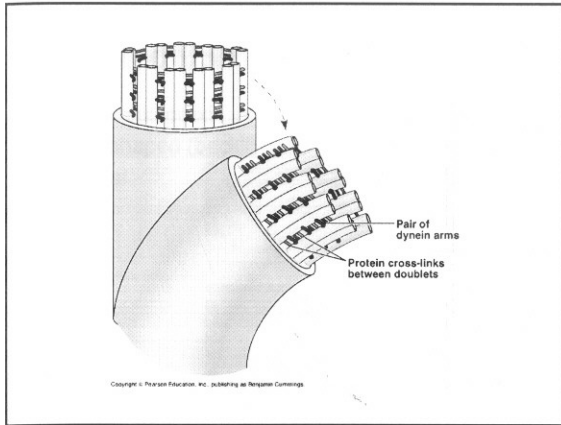


Copyright © Pearson Education, Inc., publishing as Benjamin Cummings.

13. Flagella

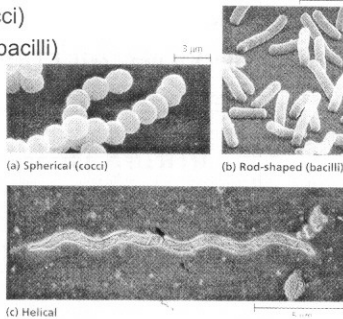


Copyright © Pearson Education, Inc., publishing as Benjamin Cummings.

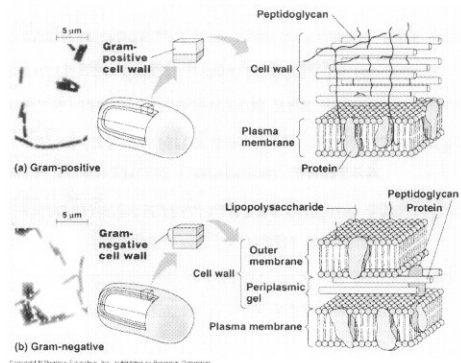


Common Shapes of Prokaryote

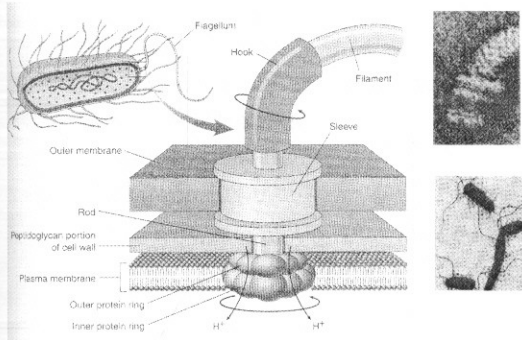
- Spherical (cocci)
- Rod-shaped (bacilli)
- Helical



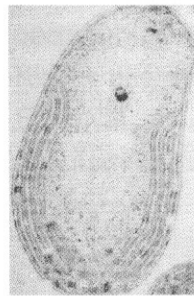
Gram-positive and gram-negative bacteria



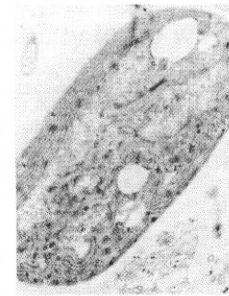
Form and function of prokaryotic flagella



Respiratory Membrane



Thylakoid-like Membrane



Differences between Prokaryote and Eukaryote

1. Multicellularity
2. Cell size
3. Chromosomes
4. Cell division and genetic recombination
5. Internal compartmentalization
6. Flagella
7. Metabolic diversity

Energy and Life: Biochemical Reaction and Enzymes

อ. นवलน้อย จุฑะพงษ์

วัตถุประสงค์

1. รู้จักนิยามของคำว่า free energy entropy และ enthalpy
2. รู้จักปฏิกิริยาเคมีที่เกิดขึ้นในสิ่งมีชีวิตและความแตกต่างระหว่าง endergonic และ exergonic reaction
3. รู้จักโครงสร้างทางเคมีของ ATP และความสำคัญของ ATP ในขบวนการ metabolism ของเซลล์
4. รู้จักหน้าที่และการทำงานของ enzyme รวมทั้งปัจจัยต่าง ๆ ที่มีผลต่อการทำงานของ enzyme
5. รู้จักชนิดและการทำงานของ enzyme inhibitor ชนิดต่าง ๆ ในการยับยั้งการทำงานของ enzyme

Metabolism

- Catabolic pathway
 - Complex molecule \Rightarrow Simple molecule
 - Degradation process
 - Cellular respiration
- Anabolic pathway
 - Simple molecule \Rightarrow Complex molecule

Energy

- Energy is the capacity to do work.
 - Kinetic energy
 - Potential energy
- Organisms are energy transformers

Laws of Thermodynamic

- The first law: The energy of the universe is constant. Energy can be transferred and transformed
- The second law: Every energy transfer or transformation increases the entropy of the universe.
- Entropy = Disorder = Randomness

Free energy

- Free energy is the portion of a system's energy that can perform work when temperature is uniform throughout the system

G = Free energy
 H = Enthalpy
 S = Entropy
 T = Temperature
 $G = H - TS$
 Start \longrightarrow Final
 $\Delta G = \Delta H - T\Delta S$

The relationship of free energy to stability

- More free energy
- Less stable
- Greater work capacity

In a spontaneous change

- The free energy of the system decreases ($\Delta G < 0$)
- The system becomes more stable
- The released free energy can be harnessed to do work

- Less free energy
- More stable
- Less work capacity

(a) Gravitational motion (b) Diffusion (c) Chemical reaction

Copyright © Pearson Education, Inc., publishing as Benjamin Cummings

The change in free energy

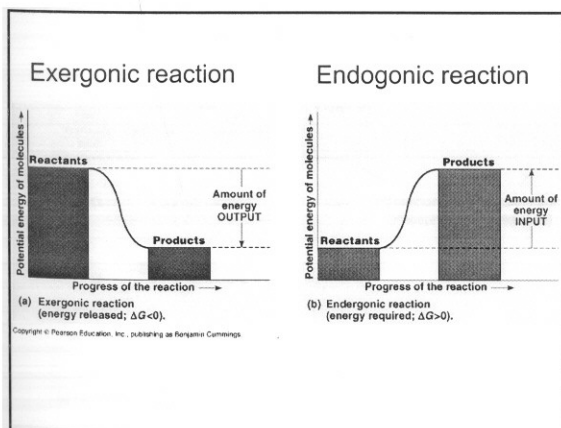
$\Delta G = G_{\text{final state}} - G_{\text{starting state}}$

In a spontaneous reaction

$\Delta G < 0$ ($\Delta G \Rightarrow -$)

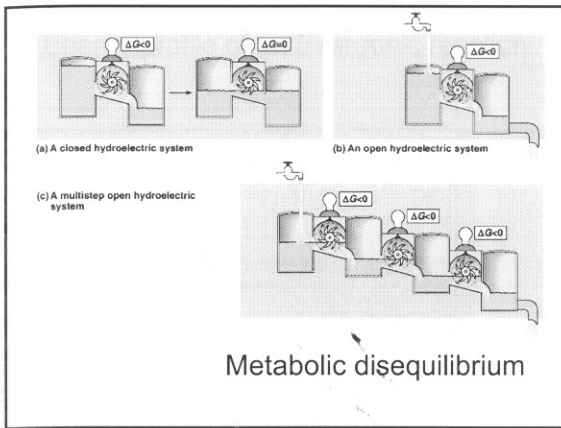
The change in free energy (ΔG)

- $\Delta G = G_{\text{final state}} - G_{\text{starting state}}$
- Exergonic reaction ($\Delta G \Rightarrow -$)
– Spontaneous process
- Endergonic reaction ($\Delta G \Rightarrow +$)



Equilibrium

$\Delta G \Rightarrow 0$



Cellular work

- Mechanical work
 - The beating of cilia
 - The contraction of muscle cell
- Transport work
 - The pumping of substances across membrane
- Chemical work
 - The pushing endergonic reaction

ATP

- Adenosine triphosphate
- ATP powers cellular work by coupling exergonic reactions to endergonic reaction

The structure and hydrolysis of ATP

Phosphate groups Ribose Adenine

(a) Structure of adenosine triphosphate

$$\text{ATP} + \text{H}_2\text{O} \rightarrow \text{ADP} + \text{P}_i$$

$$\Delta G = -7.3 \text{ Kcal/mol}$$

(b) Hydrolysis of ATP

Adenosine triphosphate (ATP) Inorganic phosphate Adenosine diphosphate (ADP) + Energy

How ATP performs work

Glu + NH₃ → Glu-NH₂ ΔG = +3.4 kcal/mol

Glutamic acid Ammonia Glutamine

① Glu + ATP → Phosphorylated Glutamic acid + ADP

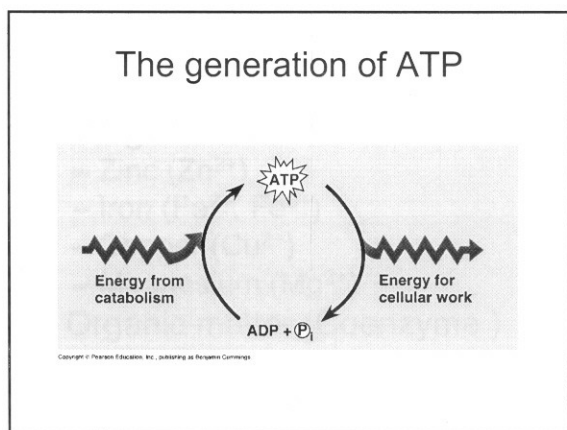
(Phosphorylation reaction)

Glu + NH₃ → Glu-NH₂ ΔG = +3.4 kcal/mol

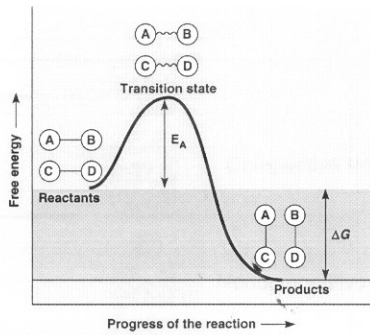
ATP → ADP + P_i ΔG = -7.3 kcal/mol

Net ΔG = -3.9 kcal/mol

(c) Free energy change with ATP

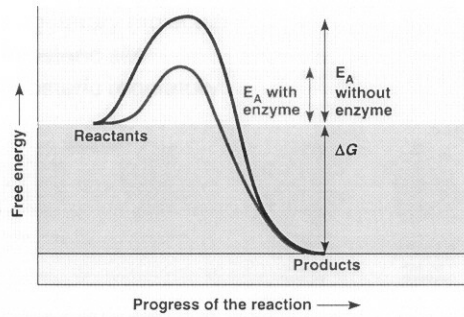


Energy profile of an Exergonic reaction



Copyright © Pearson Education, Inc., publishing as Benjamin Cummings

Enzyme lower the barrier of activation energy

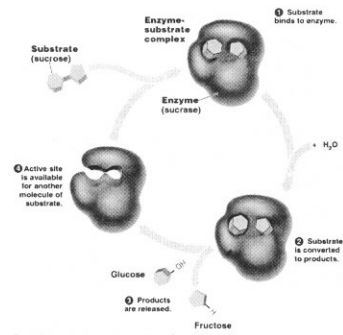


Copyright © Pearson Education, Inc., publishing as Benjamin Cummings

Enzyme

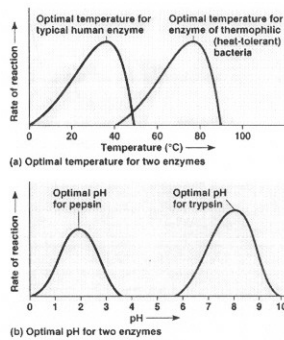
- Catalyst
- Catalytic protein
- Activation energy ↓
- $\Delta G \Leftrightarrow$
- Rate of reaction ↑

The catalytic cycle of an enzyme



Copyright © Pearson Education, Inc., publishing as Benjamin Cummings

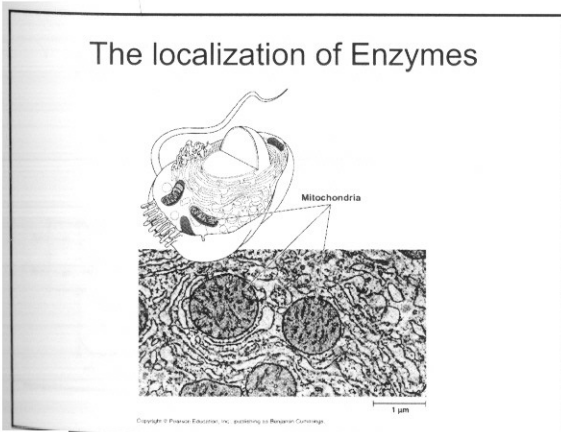
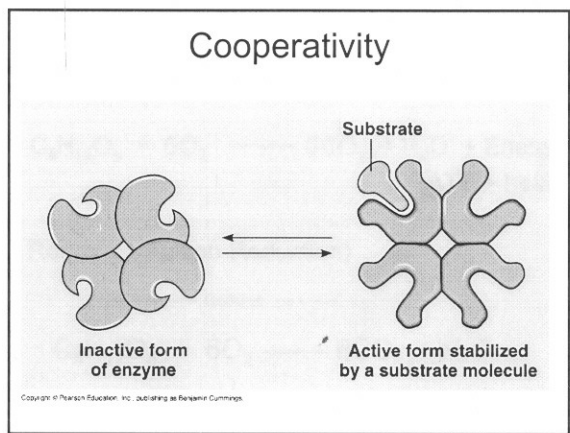
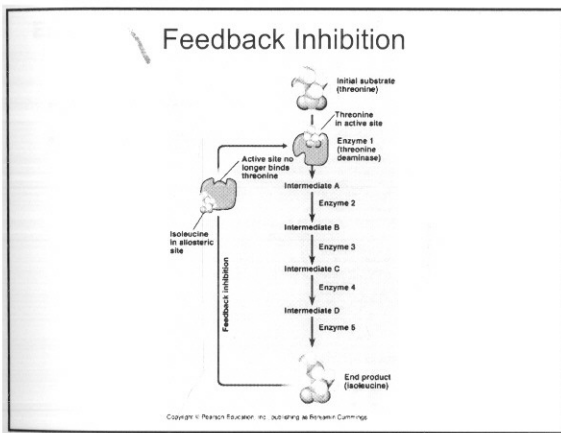
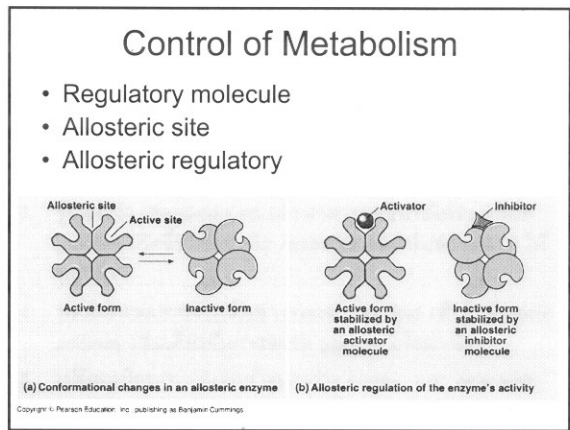
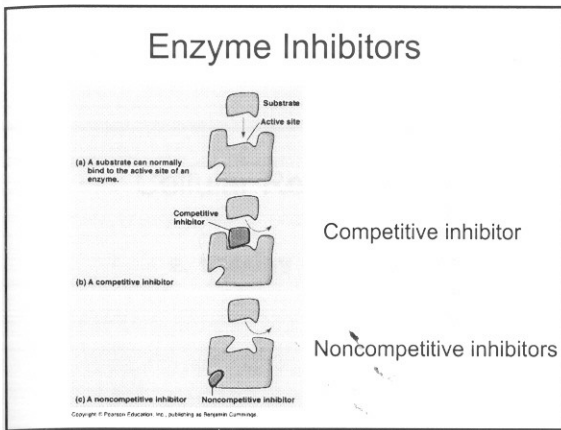
Effects of Temperature and pH



Copyright © Pearson Education, Inc., publishing as Benjamin Cummings

Cofactors

- Inorganic matter
 - Zinc (Zn^{2+})
 - Iron (Fe^{2+} , Fe^{3+})
 - Copper (Cu^{2+})
 - Magnesium (Mg^{2+})
- Organic matter (Coenzyme)
 - NAD^+
 - FAD



Cellular Respiration

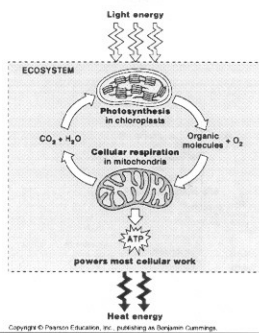
อ. นवलน้อย จุฑะพงษ์

วัตถุประสงค์

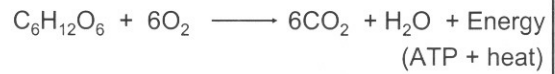
1. รู้จักสมการทั่วไปที่แสดงถึงการส่งผ่าน proton (H^+) และ electron จากสารประกอบที่เป็น Hydrogen acceptor เช่น NAD^+
2. รู้จักปฏิกิริยาเคมีในขบวนการ aerobic respiration โดยสามารถบรรยายถึงขั้นตอนต่าง ๆ ในปฏิกิริยาทั้งสามขั้นตอนได้โดยย่อ
3. รู้จักคำว่า Chemiosmosis และสามารถอธิบายได้ว่า proton gradient เกิดขึ้นได้อย่างไร และสามารถนำไปสร้าง ATP ได้อย่างไร
4. ทราบว่าเซลล์สามารถนำเอา protein และ lipid เข้าสู่ metabolic pathway เช่นเดียวกับการสลาย glucose ได้อย่างไร
5. เปรียบเทียบความแตกต่างระหว่าง aerobic และ anaerobic pathway

Energy flow and chemical recycling in ecosystem

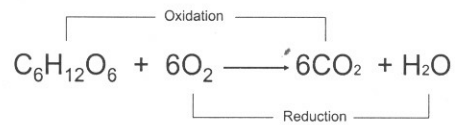
- Autotroph
- Heterotroph



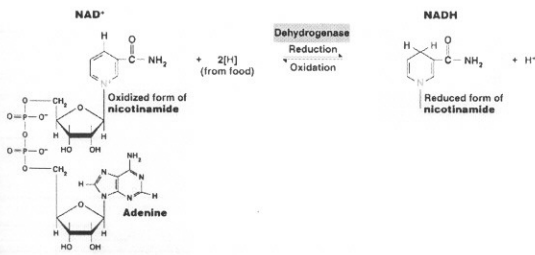
Degradation of Glucose



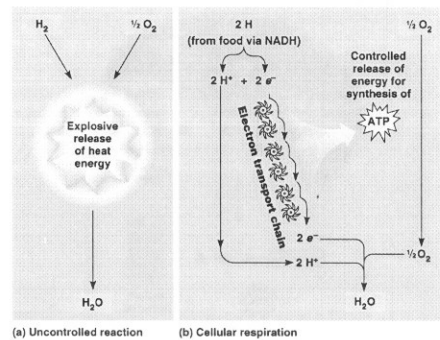
Redox (Oxidation-Reduction)



NAD^+ as an electron shuttle



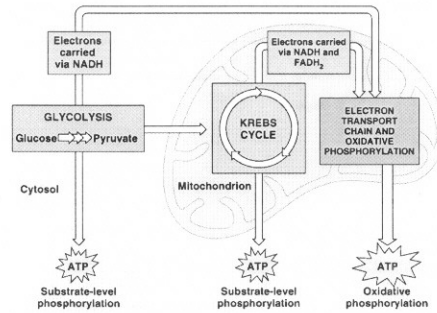
Electron transport chain



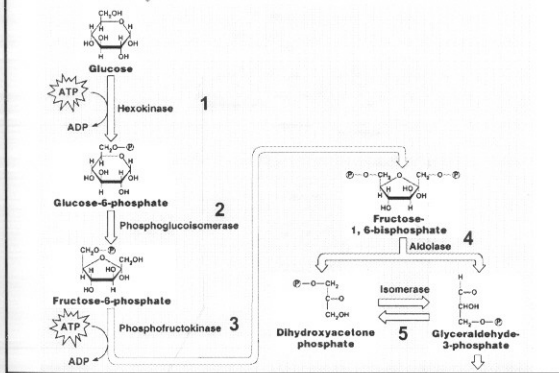
Cellular Respiration

1. Glycolysis
2. Krebs Cycle
3. Electron transport chain and oxidative phosphorylation

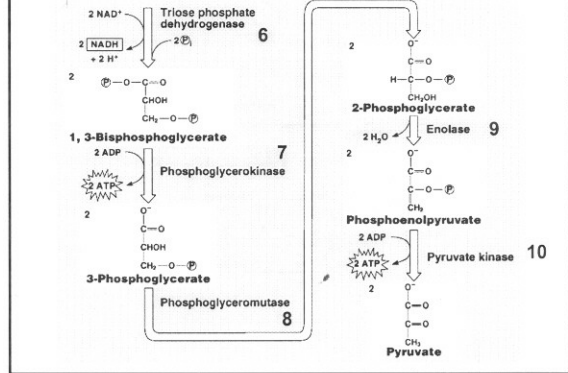
Cellular Respiration



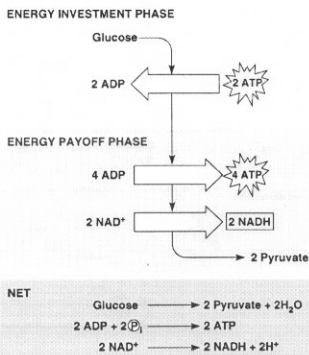
Glycolysis



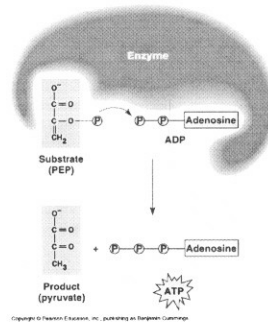
Glycolysis



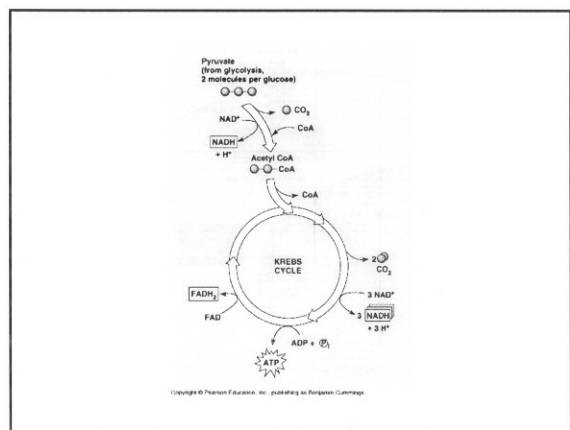
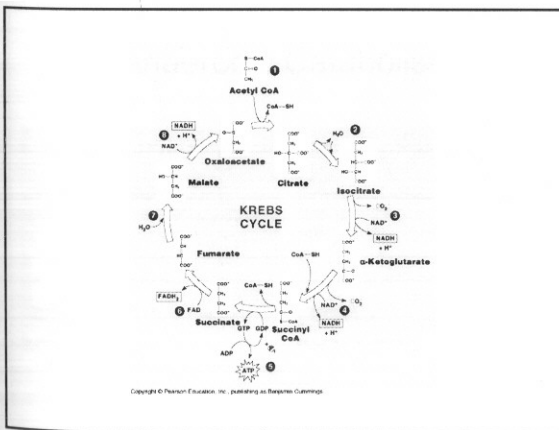
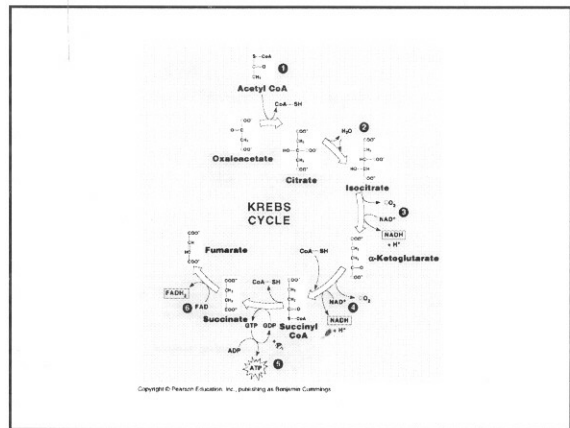
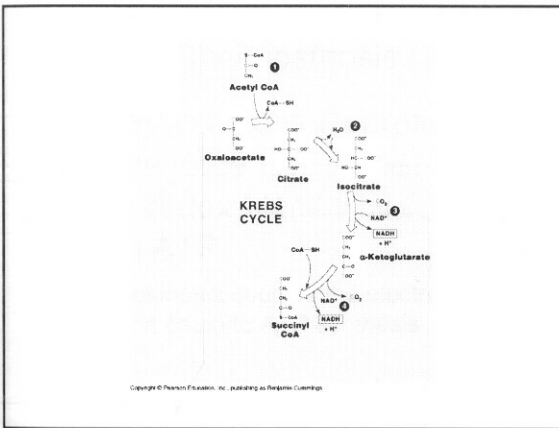
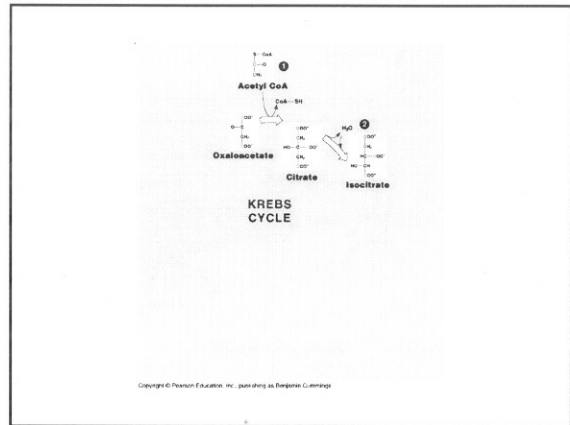
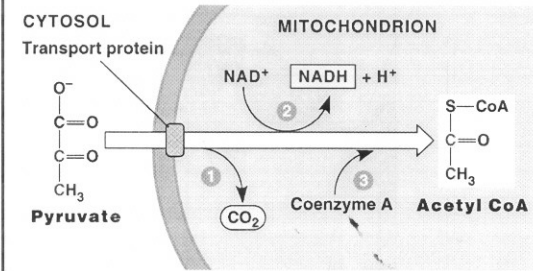
Energy input and output of glycolysis



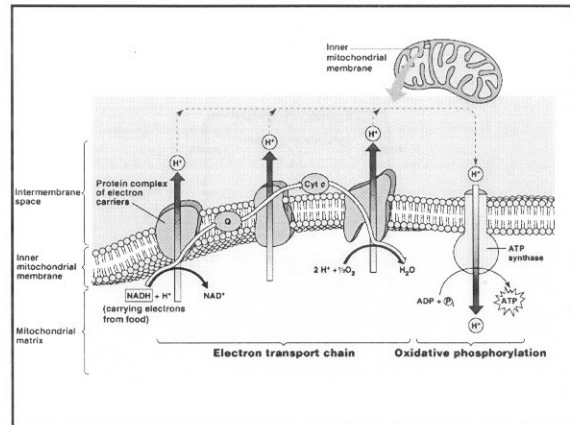
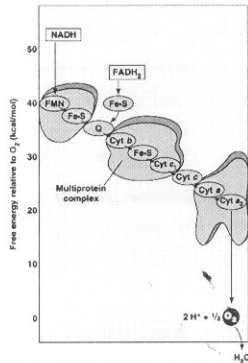
Substrate-level phosphorylation



Junction b/w glycolysis and the Krebs cycle

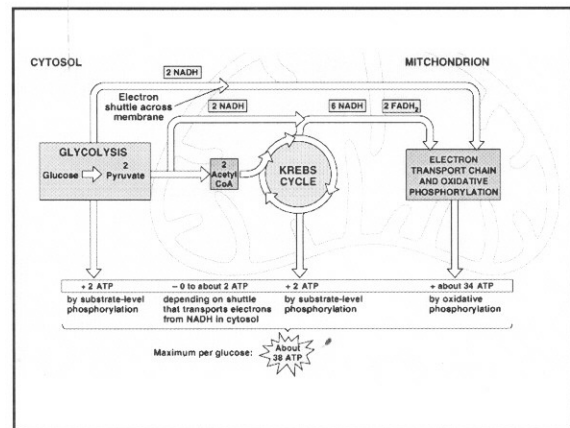


Electron transport chain

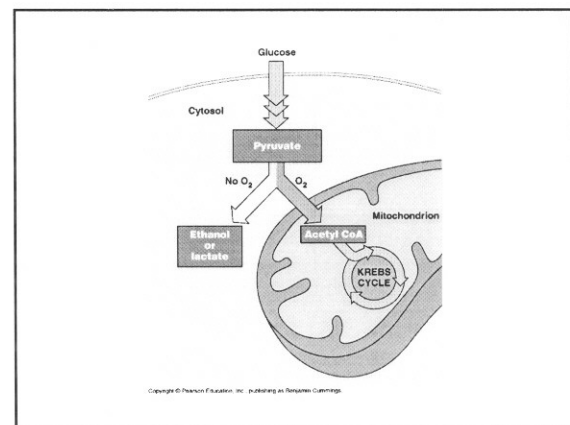
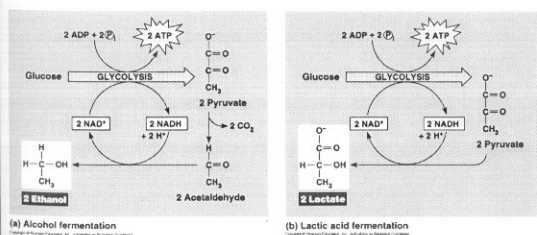


Chemiosmosis

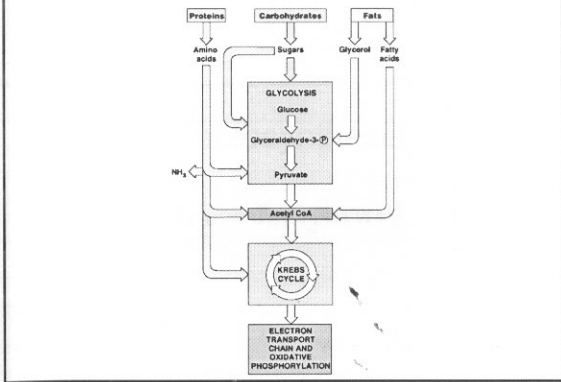
- การใช้ H^+ gradient หรือ proton motive force ในการเปลี่ยนพลังงานจากปฏิกิริยา redox ไปทำให้เกิดงาน ซึ่งในที่นี้คือการสร้าง ATP
- Chemiosmosis couples the electron transport chain to ATP synthesis



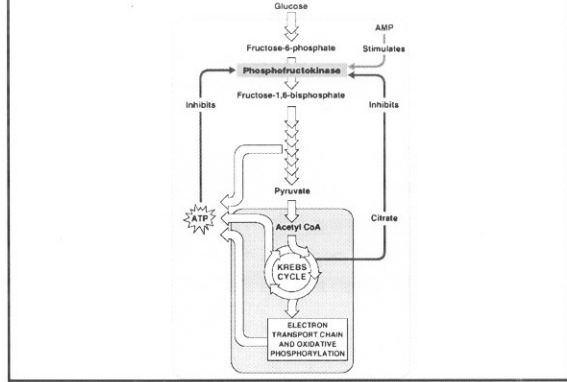
Anaerobic Catabolism



Catabolism of various food molecule



Control of cellular respiration



Photosynthesis

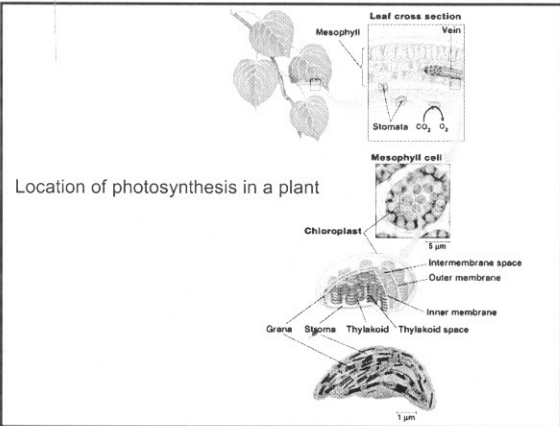
อ. นวลน้อย จุฑะพงษ์

วัตถุประสงค์

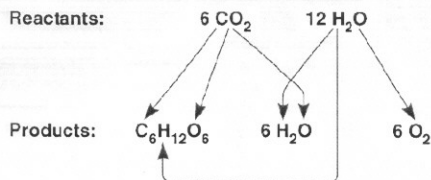
1. รู้จักโครงสร้างภายในของ chloroplast และอธิบายได้ว่า โครงสร้างเหล่านี้ทำให้เกิดขบวนการสังเคราะห์ด้วยแสงอย่างไร
2. ทราบปฏิกิริยาในขบวนการ photosynthesis รวมทั้งที่มาของ atom ที่เป็นส่วนประกอบของ end product
3. สามารถแยกความแตกต่างระหว่าง light-dependent และ light-independent reaction ในขบวนการ photosynthesis รวมทั้งสามารถสรุปปฏิกิริยาที่เกิดขึ้นในแต่ละ phase ได้

วัตถุประสงค์

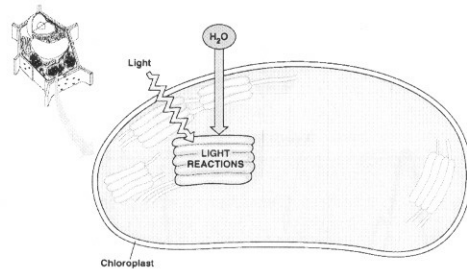
4. สามารถบอกความแตกต่างของ cyclic และ noncyclic photophosphorylation ได้
5. เข้าใจภาพรวมของปฏิกิริยาเคมีที่เกี่ยวข้องกับการเปลี่ยน CO₂ เป็น glucose ใน Calvin cycle รวมทั้งสามารถบอกถึงจำนวน ATP และ NADPH ที่จำเป็นต้องใช้ในปฏิกิริยาได้
3. สามารถอธิบายได้ว่าพืชนำ proton gradient สร้าง ATP ได้อย่างไร
4. ทราบความแตกต่างระหว่างพืช C₃ และ C₄
- 7.

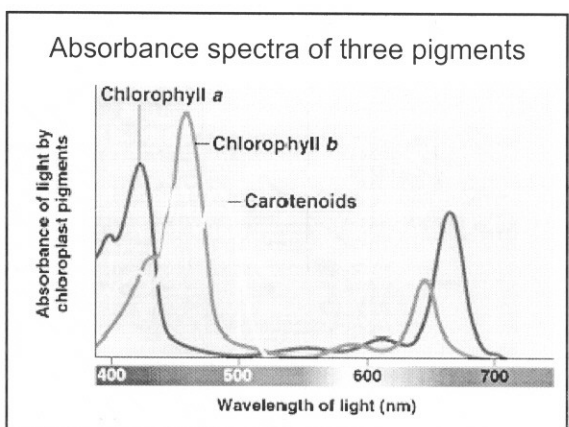
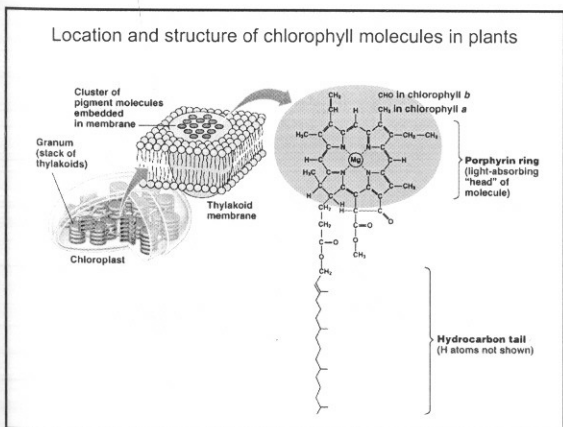
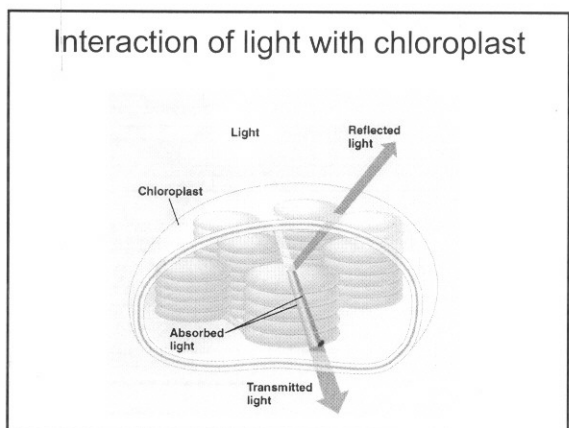
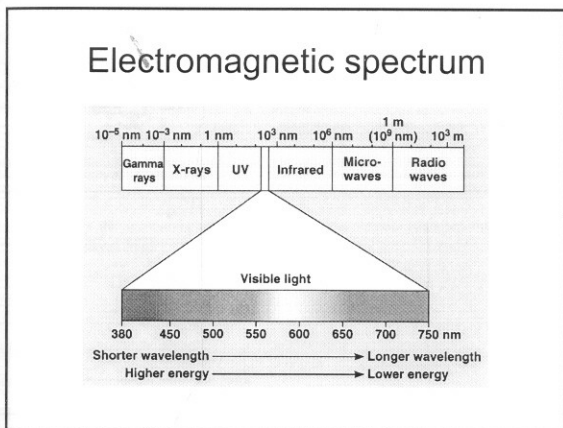
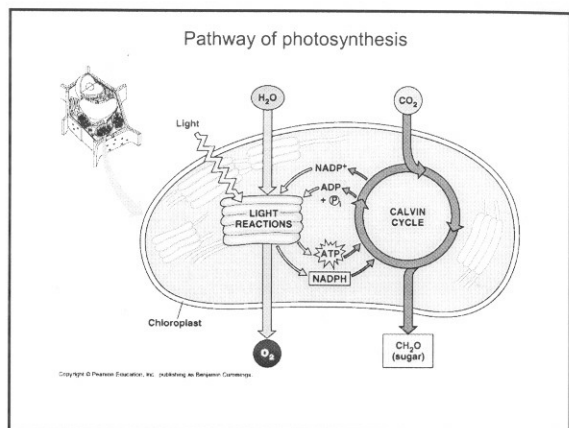
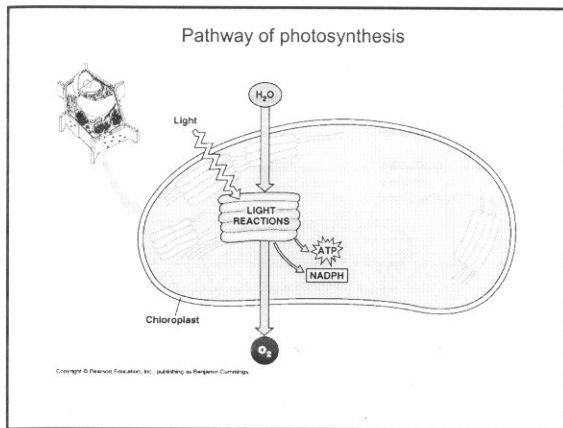


Tracking atoms through photosynthesis

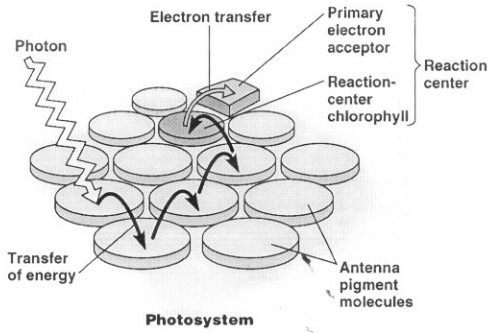


Pathway of photosynthesis

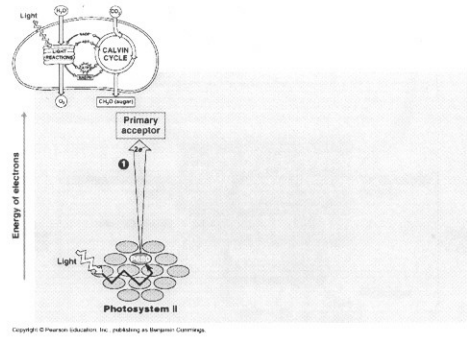




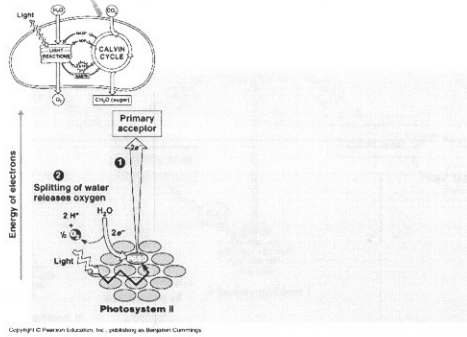
How a photosystem harvests light



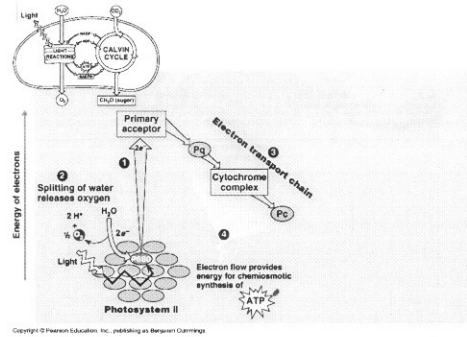
Noncyclic electron flow during the light reaction



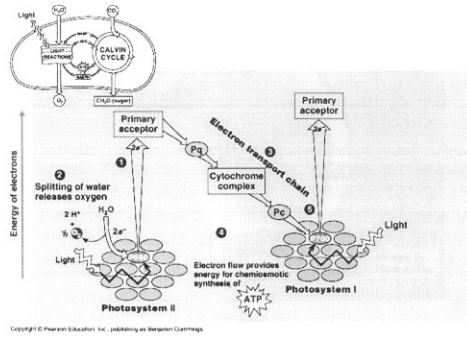
Noncyclic electron flow during the light reaction



Noncyclic electron flow during the light reaction



Noncyclic electron flow during the light reaction



Noncyclic electron flow during the light reaction

