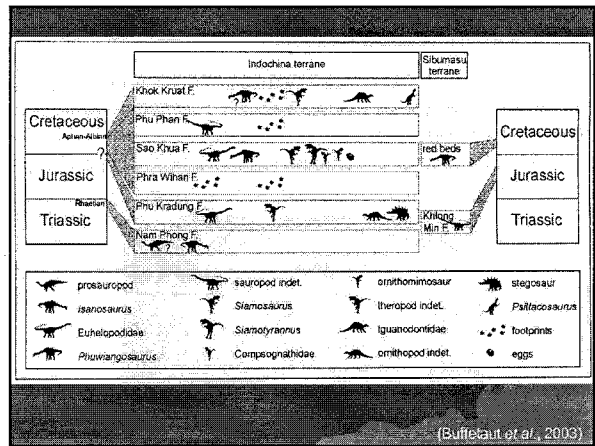
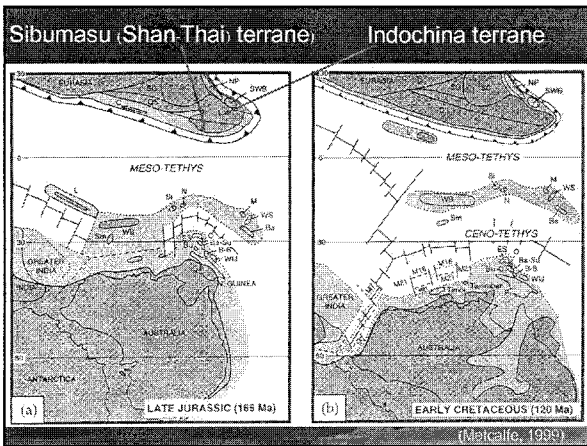
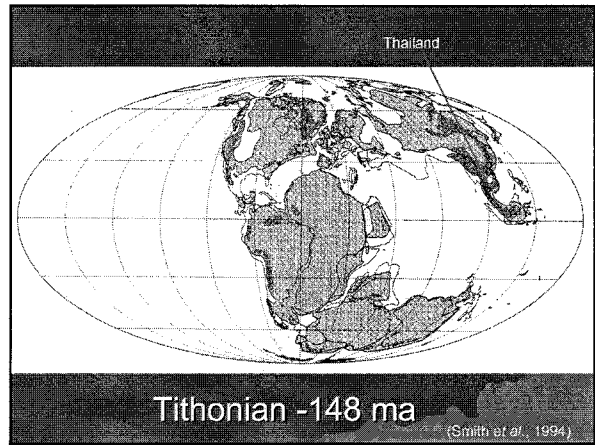
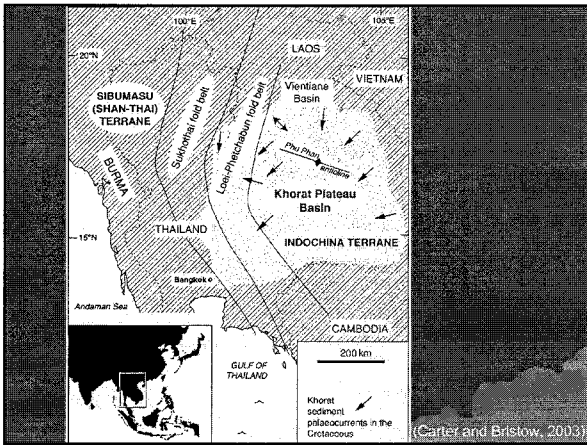
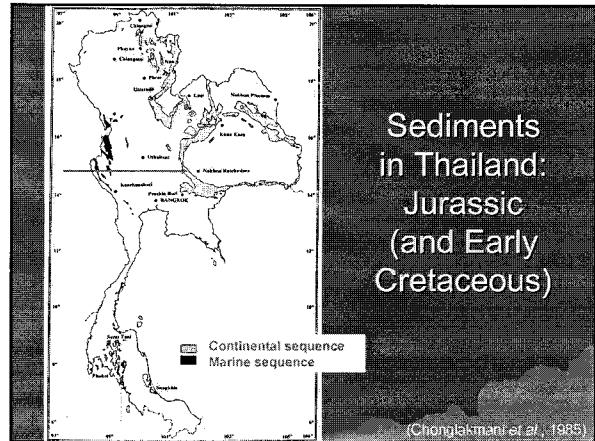
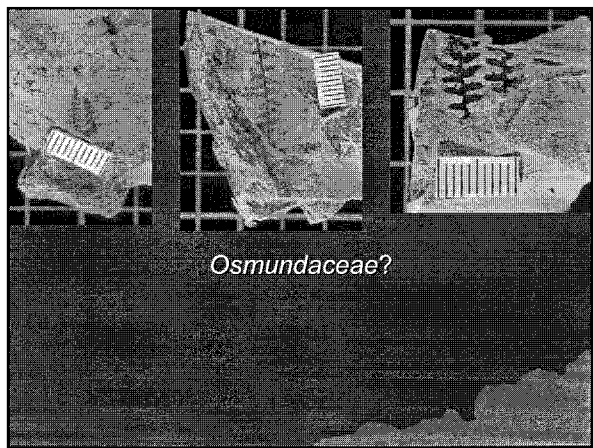
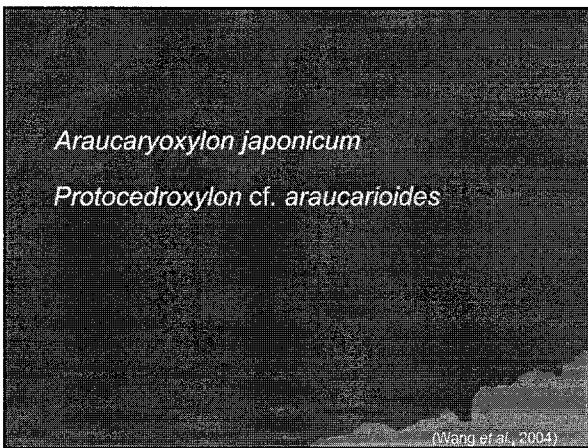
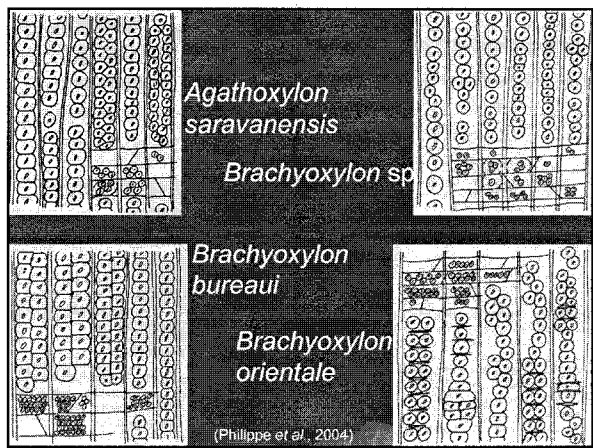
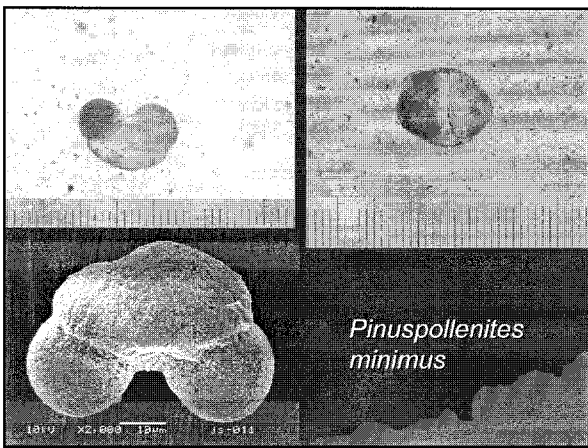
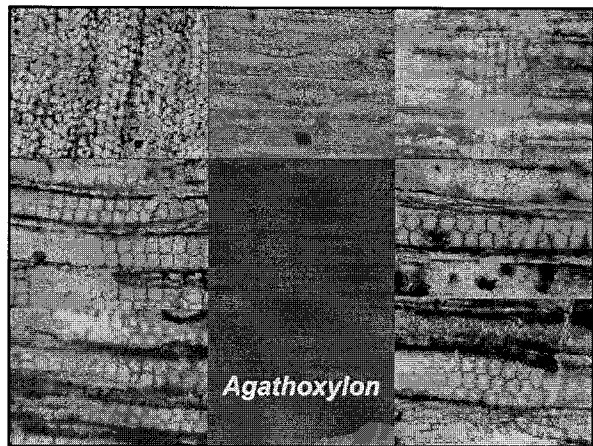
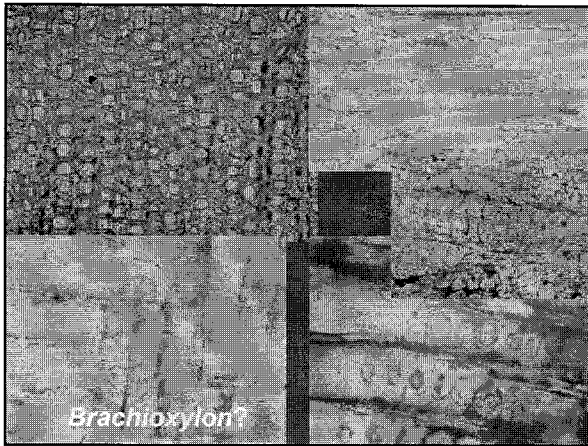
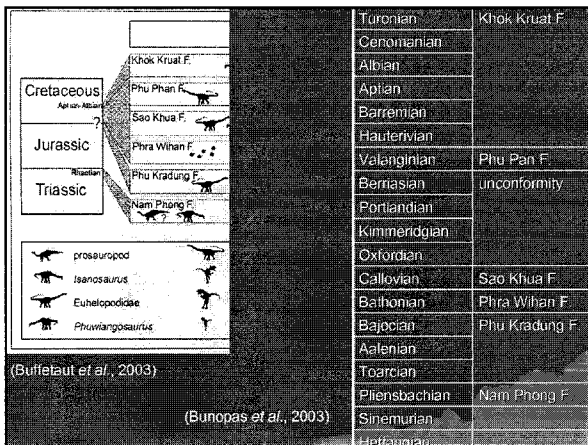
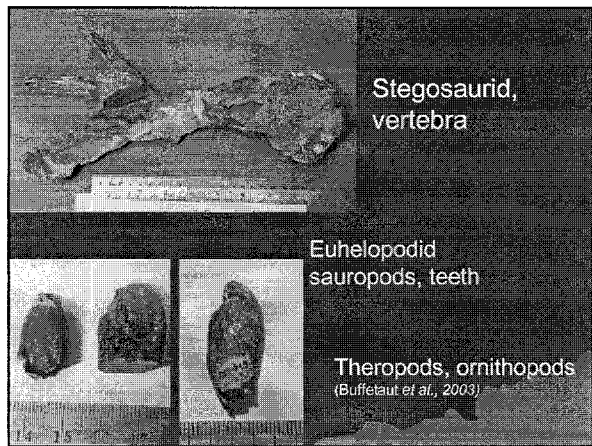
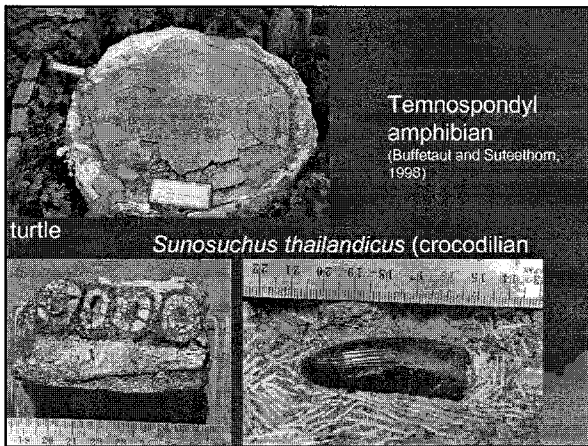
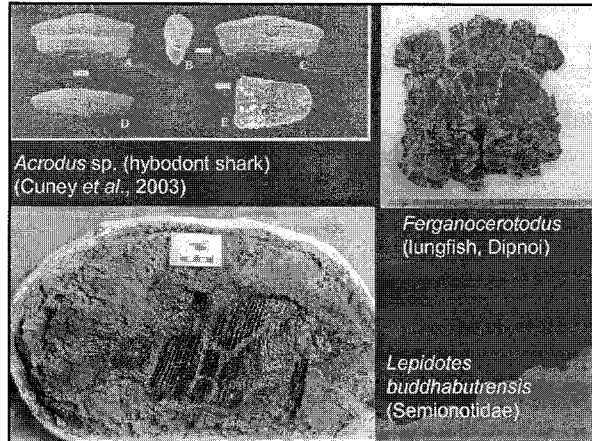
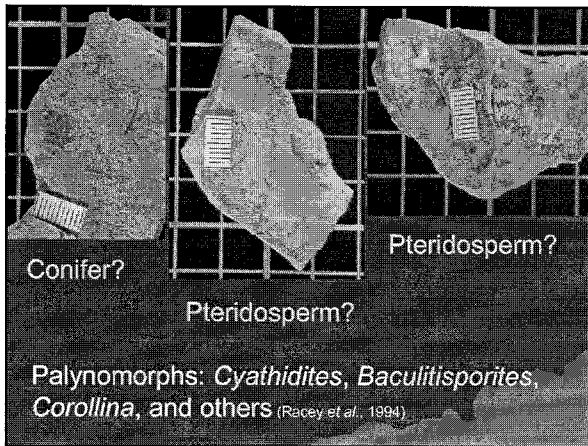


Floras from the Late Jurassic of Northeastern Thailand

Paul J. Grote
 School of Biology, Institute of Science
 Suranaree University of Technology
 Nakhon Ratchasima, Thailand







- ### Ages
- ◆ Khok Kruat: Aptian – Albian (dinosaurs, freshwater sharks)
 - ◆ Phu Pan: Norian – Cenomanian (palynoflora)
 - ◆ Sao Khua: Late Jurassic – Early Cretaceous (palynoflora); Middle Jurassic (paleomagnetic data)
 - ◆ Phra Wihan: Berriasian – Barremian (palynoflora); Early Cretaceous: fission track analysis

- ◆ Phu Kradung: Early Jurassic to Early Cretaceous (palynoflora); Early Cretaceous (fission track analysis)
- ◆ Nam Phong: Late Norian – Rhaetian (palynoflora)

Racey et al., 1994

Acknowledgements

- ◆ Varavudh Suteethorn and staff and students at Phu Kum Khao, Kalasin
- ◆ Wipanu Rugmai, Nareerat Boonchai, and Pratuang Jintasakul
- ◆ Suranaree University of Technology